



FRAMELESS EURO

Product Catalog 2025

www.nisbetbrower.com/infinitycabinets

INTRODUCING OUR VERY OWN

Frameless Collection

Presenting Nisbet Brower's exclusive Infinity Frameless Collection – a novel range of European-styled cabinets meticulously crafted to enhance your kitchen and bathroom areas. Constructed with enduring melamine and engineered furniture board, these cabinets showcase modern frameless design that maximizes space efficiency while ensuring robust and refined aesthetics. The discreet hinges and full-overlay doors contribute to the sleek lines and minimalist allure characteristic of European cabinetry, bringing both style and practicality to your everyday life. At Nisbet Brower, our dedication lies in crafting living spaces that seamlessly merge sophistication and innovation. This line exemplifies our commitment, offering adaptable cabinetry solutions for contemporary living. Enhance your living space with Infinity – a fusion of superior craftsmanship and contemporary design, delivering an unparalleled home experience.



Natural Oak Frameless

Frameless Euro



MATTE WHITE

Matte White cabinets feature modern sophistication in matte white. Ideal for kitchen or bathroom remodels, adding a timeless and fresh touch to contemporary designs



MATTE GREY

Matte Grey brings modern elegance to your kitchen or bathroom with its muted matte grey finish. Perfect for contemporary designs, it adds sophistication and a calming ambiance to your space.



CUSTOM COLOR

Choose from a wide range of laminate options to perfectly complement your project's aesthetic. Whether you need a bold statement or a subtle, cohesive look, we provide tailored solutions to meet your style and functionality needs.



NATURAL OAK

Elevate your remodel with Natural Oak – a seamless, timeless cabinet design in light natural wood finish for sophistication, durability, and easy maintenance in kitchens and bathrooms.



WALNUT

Perfect for kitchens and bathrooms, they exude enduring charm while keeping maintenance hassle-free. Let your space reflect your unique style with a touch of Walnut sophistication.



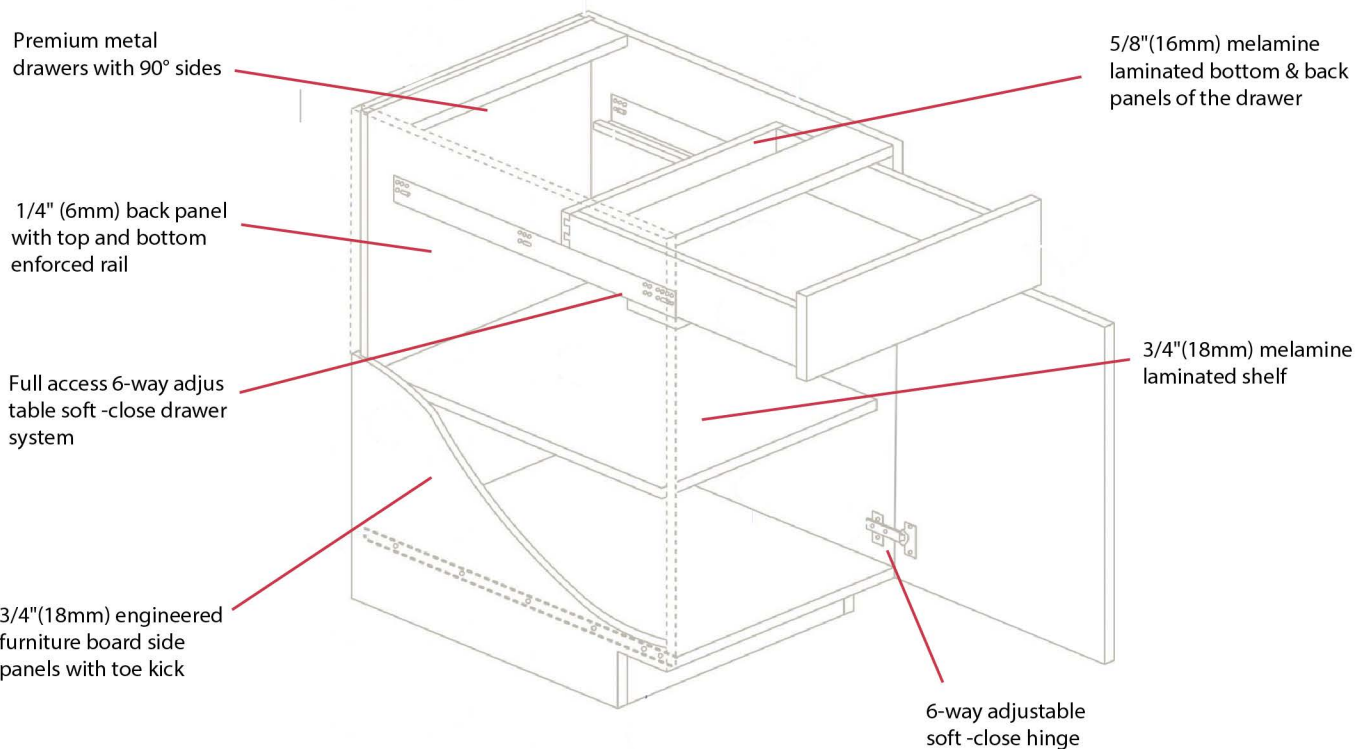
Custom Finishes & Colors

					
WEEKEND GET AWAY	WINTER FUN	CASTING AT FIRST LIGHT	SUGAR ON ICE	SHEER BEAUTY	FASHIONISTA
					
THE CHAMELEON	BRUSHED ALUMINUM	RIVER ROCK	FACTORY 01	FACTORY 02	WHITE HALIFAX OAK
					
NATURAL HALIFAX OAK	TOBACCO HALIFAX OAK	BROWN WARMIA WALNUT	LIGHT NATURAL CASELLA OAK	NATURAL CASELLA OAK	BROWN CASELLA OAK
					
BEIGE TEXTILE	LIGHT VICENZA OAK	VICENZA OAK	GREY VICENZA OAK	GREY TEXTILE	PEARL WHITE HG
					
WINTER FROST SM	SUN GREY HG	SUN GREY SM	STONE GREY HG	STONE GREY SM	ECLIPSE HG
					
ECLIPSE SM	ROYAL BLUE HG	ROYAL BLUE SM	MAJESTIC HG	MAJESTIC SM	CREAM TOFFEE HG
					
CREAM TOFFEE SM	PASTEL HG	PASTEL SM	MINT GREEN HG	MINT GREEN SM	

HG = HIGH GLOSS SM = SUPER MATTE Please contact us for details.

Frameless Euro Construction

Infinity is built to last. It is manufactured to precise standards using all particle or upgrade plywood construction. All hinges and drawer glides are fully adjustable and utilize soft close technology for a luxury look and feel.



Features

Side Panel, Shelving, and Bottom Panel

3/4" (18mm) particle or plywood board with white color melamine laminate on both sides and PVC edge banding of matching color.

Drawer Panel

Drawer bottom & back panel apply 5/8" (16mm) particle or plywood board, with white color melamine laminate on both sides and PVC edge banding of matching color.

Back Panel

Top & bottom rail of 3/4"(18mm) particle or plywood, 1/4"(6mm) MDF cored.

Drawer Hardware

Full-extension soft-close drawer glides of 500mm glide length

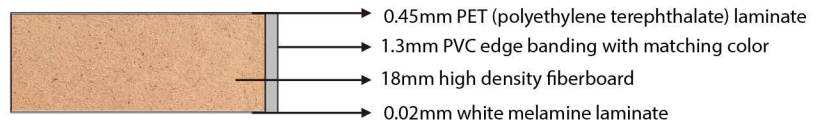
Hinge Hardware

Adjustable 110 degree opening soft close-hinges, easy to install.



Matte White

3/4" (18mm) thick MFC board, with melamine laminate on both sides, and ABS banding of matching color on all edges.



Features

Side Panel, Shelving, and Bottom Panel

3/4" (18mm) particle or plywood board with creamy white color melamine laminate on both sides and PVC edge banding of matching color.

Drawer Panel

Drawer bottom & back panel apply 5/8" (16mm) particle or plywood board, with creamy white color melamine laminate on both sides and PVC edge banding of matching color.

Back Panel

Top & bottom rail of 3/4" (18mm) particle or plywood, 1/4" (6mm) MDF cored.

Drawer Hardware

Full-extension soft-close drawer glides of 500mm glide length

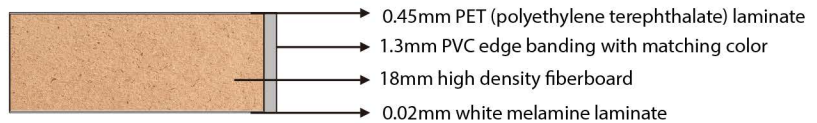
Hinge Hardware

Adjustable 110 degree opening soft close-hinges, easy to install.



Matte Grey

3/4" (18mm) thick MFC board, with melamine laminate on both sides, and ABS banding of matching color on all edges.



Features

Side Panel, Shelving, and Bottom Panel

3/4" (18mm) particle or plywood board with creamy white color melamine laminate on both sides and PVC edge banding of matching color.

Drawer Panel

Drawer bottom & back panel apply 5/8" (16mm) particle or plywood board, with creamy white color melamine laminate on both sides and PVC edge banding of matching color.

Back Panel

Top & bottom rail of 3/4" (18mm) particle or plywood, 1/4" (6mm) MDF cored.

Drawer Hardware

Full-extension soft-close drawer glides of 500mm glide length

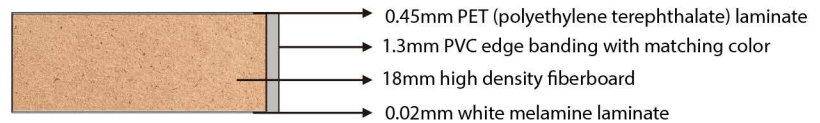
Hinge Hardware

Adjustable 110 degree opening soft close-hinges, easy to install.



Natural Oak

3/4" (18mm) thick MFC board, with melamine laminate on both sides, and ABS banding of matching color on all edges.



Features

Side Panel, Shelving, and Bottom Panel

3/4" (18mm) particle or plywood board with creamy white color melamine laminate on both sides and PVC edge banding of matching color.

Drawer Panel

Drawer bottom & back panel apply 5/8" (16mm) particle or plywood board, with creamy white color melamine laminate on both sides and PVC edge banding of matching color.

Back Panel

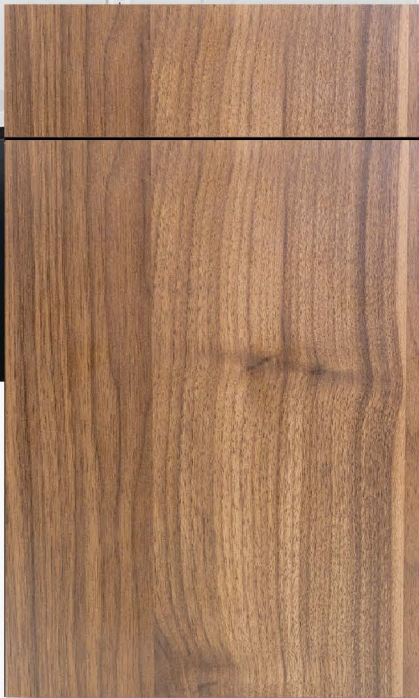
Top & bottom rail of 3/4" (18mm) particle or plywood, 1/4" (6mm) MDF cored.

Drawer Hardware

Full-extension soft-close drawer glides of 500mm glide length

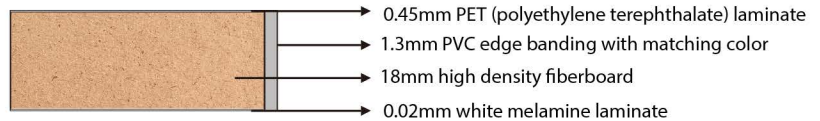
Hinge Hardware

Adjustable 110 degree opening soft close-hinges, easy to install.



Walnut

3/4" (18mm) thick MFC board, with melamine laminate on both sides, and ABS banding of matching color on all edges.



Features

Side Panel, Shelving, and Bottom Panel

3/4" (18mm) particle or plywood board with creamy white color melamine laminate on both sides and PVC edge banding of matching color.

Drawer Panel

Drawer bottom & back panel apply 5/8" (16mm) particle or plywood board, with creamy white color melamine laminate on both sides and PVC edge banding of matching color.

Back Panel

Top & bottom rail of 3/4" (18mm) particle or plywood, 1/4" (6mm) MDF cored.

Drawer Hardware

Full-extension soft-close drawer glides of 500mm glide length

Hinge Hardware

Adjustable 110 degree opening soft close-hinges, easy to install.



Walnut/Matte White Frameless



Matte Grey Frameless

Get In Touch With Us!



513-563-1111



www.nisbetbrower.com



Nisbet Brower Corporate Office

11575 Reading Road, Cincinnati, OH 45241



www.nisbetbrower.com/infinitycabinets